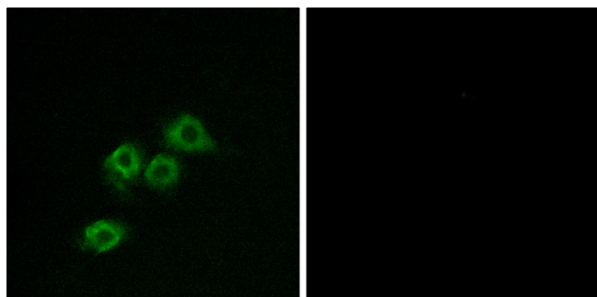




GPR1 Polyclonal Antibody

Catalog No	YP-Ab-13277
Isotype	IgG
Reactivity	Human;Mouse;Rat
Applications	IF;ELISA
Gene Name	GPR1
Protein Name	G-protein coupled receptor 1
Immunogen	The antiserum was produced against synthesized peptide derived from human GPR1. AA range:121-170
Specificity	GPR1 Polyclonal Antibody detects endogenous levels of GPR1 protein.
Formulation	Liquid in PBS containing 50% glycerol, 0.5% BSA and 0.02% sodium azide.
Source	Polyclonal, Rabbit,IgG
Purification	The antibody was affinity-purified from rabbit antiserum by affinity-chromatography using epitope-specific immunogen.
Dilution	Immunofluorescence: 1/200 - 1/1000. ELISA: 1/5000. Not yet tested in other applications.
Concentration	1 mg/ml
Purity	≥90%
Storage Stability	-20°C/1 year
Synonyms	GPR1; G-protein coupled receptor 1
Observed Band	
Cell Pathway	Cell membrane ; Multi-pass membrane protein . Internalizes in presence of its ligand, TAFA1 (By similarity). Internalizes efficiently in response to RARRES2 (PubMed:27716822). .
Tissue Specificity	Expressed in hippocampus.
Function	function:Orphan receptor. Probable opioid receptor. Can act as a co-receptor for HIV-1.,similarity:Belongs to the G-protein coupled receptor 1 family.,tissue specificity:Expressed in hippocampus.,
Background	function:Orphan receptor. Probable opioid receptor. Can act as a co-receptor for HIV-1.,similarity:Belongs to the G-protein coupled receptor 1 family.,tissue specificity:Expressed in hippocampus.,
matters needing attention	Avoid repeated freezing and thawing!
Usage suggestions	This product can be used in immunological reaction related experiments. For more information, please consult technical personnel.

Products Images



Immunofluorescence analysis of MCF7 cells, using GPR1 Antibody. The picture on the right is blocked with the synthesized peptide.